

# Southside Constructors, Inc. Builds Elegant Townhomes in Gaston County

*Local Developer selects General Contractor to build new Townhomes*



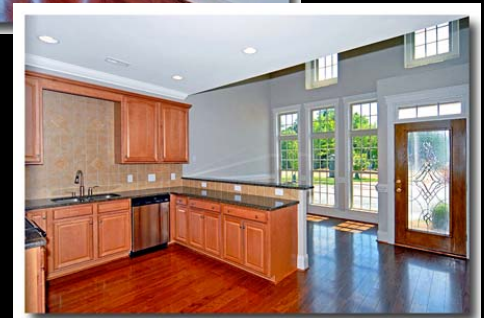
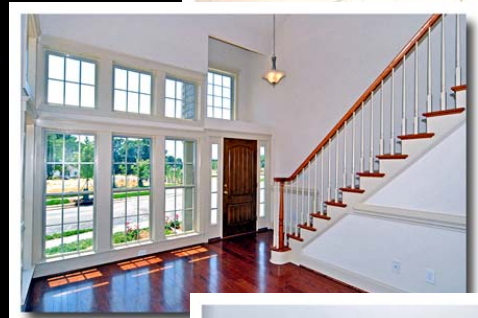
**STUART'S  
LANDING**

Southside Constructors, Inc. was selected by K & L Development, Inc. to build new elegant townhouse community in Gaston County. Designed by MWT Architecture P.C., this charming community located in Cramerton, NC offers fifty-two 2-story units, spacious floor plans ranging from 1,700 - 2,200 SF with plenty of features and design flair.

- ♦ **"The Palmer" (2,129 SF)**  
3 bedroom, 2-1/2 bath, walk-in closets in each bedroom, 2 car garage, patio
- ♦ **"The Woods" (2,032 SF)**  
3 bedroom, 2-1/2 bath, walk-in closets in each bedroom, media room, 2 car garage, patio
- ♦ **"The Watson" (1,660 SF)**  
3 bedroom, 2-1/2 bath, walk-in closet in master suite, 1 car garage, patio
- ♦ **"The Nicklaus" (1,640 SF)**  
3 bedroom, 2-1/2 bath, walk-in closet in master suite, 1 car garage, patio

Special features include crown molding, 9 foot ceilings, gas fireplace, granite counter tops in kitchen, garden tubs, and separate/built-in showers. Additional amenities include a clubhouse with fitness center and kitchen area, pool with a deck lounge area and wrought iron fence, decorative street lights and sidewalks throughout, and extensive landscaping with sodded yards and irrigation.

Each building is slab on grade construction with wood framing and an exterior veneer of synthetic stone and LP siding. Grading, site utilities, erosion control, storm drainage, paving, as well as installation of plumbing, electrical, and mechanical systems are also part of the project. Kitchen appliances for the units include range hood, range, and dishwasher.



**Owner:**  
K & L Development, Inc.

**Area:**  
93,600 SF

**Completion Date:**  
2009

**Services Provided:**  
General Construction

**Construction Cost:**  
\$12 Million

**SOUTHSIDE  
CONSTRUCTORS, INC.**